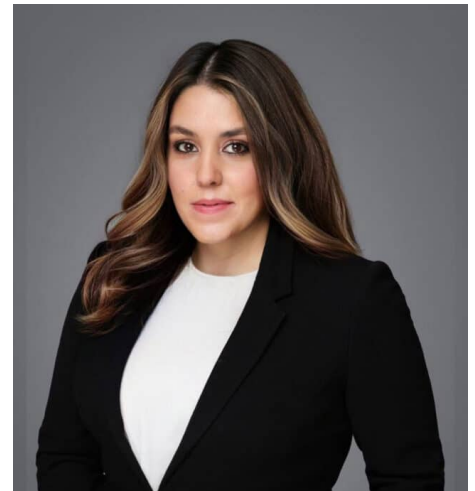


# Ghazaleh Rezaie

Call: 2009  
rezaie@12kbw.co.uk



## AREAS OF EXPERTISE

Employment & Discrimination, Personal Injury, International & Travel, Clinical Negligence, Health & Safety, Costs & Litigation Funding, Credit Hire, Aviation, Other

Ghazaleh attracts consistent praise from solicitors and lay clients for her attention to detail, strategic thinking and commercial awareness. She is particularly commended for her user-friendly approach and command of the court room during cross examination.

Ghazaleh's practice encompasses every aspect of employment law and she is regularly instructed to attend Employment Tribunal and High Court trials in disputes involving discrimination in respect of all protected characteristics, equal pay, whistleblowing, TUPE, unfair dismissal, redundancy, PHA claims, PHI claims, restraint of trade and partnership disputes. Ghazaleh has familiarity with all aspects of employment tribunal and employment appeal tribunal practice and procedure, to include costs applications.

Consistently providing the highest standards of service result in regular and repeat instructions from solicitors of the highest calibre. Solicitors welcome her collaborative approach to litigation, choosing to seek her advice and guidance from the earliest stages of litigation, ensuring in turn that the service to the lay client is as comprehensive as can. Client's see Ghazaleh and her solicitors as their team.

Ghazaleh's core clients include globally renowned facilities management and logistics companies, nationwide pharmaceutical companies, educational institutions, NHS Trusts and Local Authorities.

Ghazaleh maintains a personal injury practice and is therefore particular adept at advising on matters where there is a cross-over between employment law and personal injury, such as stress at work claims. Her expertise in discrimination matters and the Equality Act 2010 have also stood her in good stead in cases concerning the provision of services both by public and private entities.

Where, as is often the case in the Employment Tribunal, Ghazaleh's practice has seen her face a litigant-in-person, Ghazaleh has been commended by Judges for her sensitivity and considered approach notwithstanding the tenacity with which she presents her client's position.

## Qualifications & Awards

---

LLB (hons) Law and French Law – University of Leeds and Université Nancy II

Bar Vocational Course (Very Competent) – BPP Law School London

Exhibitioner – Inner Temple, 2008

Duke of Edinburgh Entrance Award – Inner Temple, 2008

## Appointments & Memberships

---

Qualified and Registered to Practice as an Attorney in New York State since 2010.

PIBA

ELBA

## Directories

---

*My go-to. – Chambers & Partners, 2025*

*Ghazaleh is meticulous, methodical and experienced well above her call. – Chambers & Partners, 2025*

*Ghazaleh is a great barrister, very commercial, pragmatic and great with clients. – Chambers & Partners, 2025*

*Ghazaleh is a superstar. She is fantastic with lay clients, razor sharp on the law and a fierce advocate. – Legal 500, 2025*

*Ghazaleh's advocacy is systematic, persuasive, informed and relentless, and a joy to watch. She is particularly skilled in building her case through cross-examination, with a carefully thought out pace and structure that chips away at her opponent's arguments. Her ability to absorb the finest details of the case is second-to-none. – Legal 500, 2024*

*She is able to command the attention of a court. – Chambers & Partners, 2024*

*Ghazaleh is extremely approachable, clear and easy to work with. – Chambers & Partners, 2024*

*Ghazaleh is great to work with and is very responsive and commercial. – Chambers & Partners, 2024*