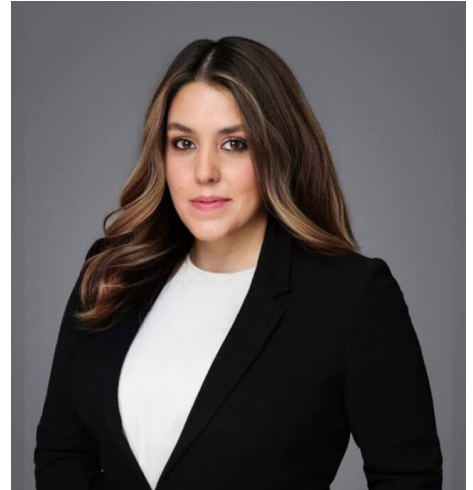


Ghazaleh Rezaie

Call: 2009
rezaie@12kbw.co.uk



AREAS OF EXPERTISE

Employment & Discrimination, Personal Injury, International & Travel, Clinical Negligence, Health & Safety, Costs & Litigation Funding, Credit Hire, Aviation, Other

Ghazaleh attracts consistent praise from solicitors and lay clients for her attention to detail, strategic thinking and commercial awareness. She is particularly commended for her user-friendly approach and command of the court room during cross examination.

Ghazaleh's practice encompasses every aspect of employment law and she is regularly instructed to attend Employment Tribunal and High Court trials in disputes involving discrimination in respect of all protected characteristics, equal pay, whistleblowing, TUPE, unfair dismissal, redundancy, PHA claims, PHI claims, restraint of trade and partnership disputes. Ghazaleh has familiarity with all aspects of employment tribunal and employment appeal tribunal practice and procedure, to include costs applications.

Consistently providing the highest standards of service result in regular and repeat instructions from solicitors of the highest calibre. Solicitors welcome her collaborative approach to litigation, choosing to seek her advice and guidance from the earliest stages of litigation, ensuring in turn that the service to the lay client is as comprehensive as can. Client's see Ghazaleh and her solicitors as their team.

Ghazaleh's core clients include globally renowned facilities management and logistics companies, nationwide pharmaceutical companies, educational institutions, NHS Trusts and Local Authorities.

Ghazaleh maintains a personal injury practice and is therefore particular adept at advising on matters where there is a cross-over between employment law and personal injury, such as stress at work claims. Her expertise in discrimination matters and the Equality Act 2010 have also stood her in good stead in cases concerning the provision of services both by public and private entities.

Where, as is often the case in the Employment Tribunal, Ghazaleh's practice has seen her face a litigant-in-person, Ghazaleh has been commended by Judges for her sensitivity and considered approach notwithstanding the tenacity with which she presents her client's position.

International & Travel

Ghazaleh has experience of advising clients in cases concerning jurisdictional disputes and has advised both Claimants and Defendants on the applicability of foreign laws. Most recently Ghazaleh has been involved in advising a group of clients as to whether or not they are precluded from bringing a claim in the UK where there had been settlement in the US for injuries on board a flight (ie consideration of the House of Lords decision in *Jameson –v- Central Electricity Generating Board*).

Ghazaleh's practice encompasses all areas of International and Travel Law and she is familiar with the Package Travel Regulations, the Montreal Convention, the Brussels Regulations and Rome I and Rome II.

Having been called to the New York State Bar, Ghazaleh is well placed to advise in cases involving any aspect of both Federal and State law.

Ghazaleh has a particular interest in claims involving Employment disputes in the middle east and has extensive knowledge of the UAE labour code. The crossover between UK and UAE employment law in the context of expatriates living in the UAE is an area of law which Ghazaleh is particularly adept at advising on.

Qualifications & Awards

LLB (hons) Law and French Law – University of Leeds and Université Nancy II

Bar Vocational Course (Very Competent) – BPP Law School London

Exhibitioner – Inner Temple, 2008

Duke of Edinburgh Entrance Award – Inner Temple, 2008

Appointments & Memberships

Qualified and Registered to Practice as an Attorney in New York State since 2010.

PIBA

ELBA